

IMPROVES CONCRETE QUALITY

Key performance indicators in the concrete industry are workability, strength and production costs. High-quality sand is the most significant component affecting these.

Cement is the most expensive component of the concrete compound. The workability of the final concrete mix and the amount of cement used are two of the most important parameters in concrete production. These parameters, in turn, are mainly affected by the quality of sand used in the process. The consistency of the sand can be a challenge when using natural or crushed sand that has not been produced in a well-controlled industrial process. Inconsistent sand quality leads to a higher safety margin, which results in an unnecessary increase in the amount of cement used. Cement is the most expensive component of the concrete compound, representing more than 50% of the cost of raw concrete, but less than 20% of the volume.

Characteristics of fine-sized aggregates in concrete are also crucial. Only a perfectly cubical and rounded shape of all fractions and their consistent quality can form an easily workable concrete mass. This allows the lowest possible amount of cement to be used in the final cement mix.

BENEFITS



UP TO 15% SAVINGS

IN THE USE OF CEMENT IN CONCRETE



PERFECT SHAPE

PERFECTLY CUBICAL & ROUNDED FRACTIONS



REDUCED COST

LESS TRANSPORTATION FOR AGGREGATES



SAFETY MARGIN

OPTIMAL SHAPE, GRADING AND MOISTURE

APPLICATIONS



PLASTER

CONCRETE

MORTAR

SAND PITS

PAVE JOINTING



Registered Office: 242, Manas Villa,
Opp NIT Scheme, Bajaj Nagar, Nagpur,
Maharashtra - 440010

0712-2224969 | +91-9822204280
info@mix-bag.com | www.mix-bag.com



A PRODUCT OF

METAL MINING
INDUSTRIES

BUILDING YOUR VISIONS. CREATING REALITY.

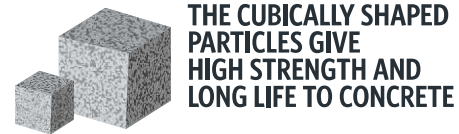
Creating a sustainable future through building preservation & green architectural solutions.



CRUSHED SAND | RIVER SAND | DRY MORTAR

www.mix-bag.com

ECO FRIENDLY DURABLE & EFFICIENT CRUSHED SAND



THE CUBICALLY SHAPED PARTICLES GIVE HIGH STRENGTH AND LONG LIFE TO CONCRETE



THE ADVANTAGES OF MIXBAG CRUSHED SAND

Original MIXBAG Sand is free from elongated and flaky particle since it is shaped cubically using VSI shaping machine. The cubically shaped particles give high strength and long life to concrete.

Original MIXBAG Sand is manufactured strictly adhering to IS 383 (1970) zone II grading. Perfect grading and cubical shape of MIXBAG Sand provides 10-15% more compressive strength for concrete and 25-30% more strength for masonry works compared to river sand and crusher dust.

Original MIXBAG Sand has minus 150 micron less than 10% and minus 45 micron less than 2% only. This helps the concrete to maintain water absorption rate of concrete less than 2% which helps to produce concrete of consistent quality.

Original MIXBAG Sand is graded with precision by removing the microfines correctly and thus it has higher 'Fineness Modules Index' compared to river sand and crusher dust. This gives good workability for concrete and masonry that help in easy and quick construction.

Original MIXBAG Sand has two grades for concreting and plastering. This saves you the work of filtering the sand. Besides, as there is no loss of sand, you can save money on it.

MIXBAG SAND QUALITY STRENGTH

MIXBAG Sand adheres to the highest standards and undergoing the following quality tests done by GEOTECH

1. Sieve analysis
2. Optical Microscopic Study to check the particle shape.
3. Workability (slump test by slump cone method).
4. Cube test for compressive strength.
5. No fear of adulteration with sea sand or muddy soil.

SPECIFICATIONS



Greater Durability

MIXBAG Sand has balanced physical and chemical properties that can withstand any aggressive environmental and climatic conditions as it has enhanced durability, greater strength and overall economy.



High Strength

The superior shape, proper gradation of fines, smooth surface texture and consistency in production parameter of chemically stable sands provides greater durability and higher strength to concrete by overcoming deficiencies like segregation, bleeding, honeycombing, voids and capillary.



Greater Workability

The crusher dust is flaky and angular in shape which is troublesome in working. There is no plasticity in the mortar which makes it even difficult for the mason to work, whereas the cubical shape with rounded edge and superior gradation gives good plasticity to mortar providing excellent workability.



Offsets Construction Defects

MIXBAG Sand has optimum initial and final setting time as well as excellent fineness which will help to overcome the deficiencies of concrete such as segregation, bleeding, honeycombing, voids and capillary.



Economy

Usage of MIXBAG Sand can drastically reduce the cost since like river sand, it does not contain impurities and wastage is NIL. In International Construction Scenario, no river sand is used at all, sand is manufactured and used, which gives superior strength.



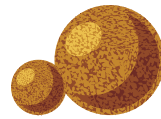
Eco-Friendly

MIXBAG Sand is the only alternative to river sand. Dredging of river beds to get river sand will lead to environmental disaster like ground water depletion, water scarcity, threat to the safety of bridges, dams etc.

COMPARISON

The natural river sand was the cheapest resources of sand. However the excessive mining of river bed to meet the increasing demand for sand in construction industry has lead to the ecological imbalance in the state. Now the sand available in the riverbed is very coarse and contains very high percentage of silt and clay. The silt and the clay presence in the sand reduces strength of concrete and holds dampness. The natural river sand is the product of sedimentation, mica, coal, fossils and other organic impurities are present, in the river sand above certain percentage which make the sand useless for concrete work.

NATURAL DUST FREE & EFFICIENT RIVER SAND



THE SPHERICAL SHAPED
PARTICLES GIVE
FINE QUALITY AND
GOOD WORKABILITY



THE ADVANTAGES OF MIXBAG RIVER SAND

Our washing and screening process means our sand products less dust and removes the oversize rocks / debris unlike our competitors sand-providing you with more usable sand for the money.

Our river sand is natural sand. It is composed of natural quartz (silica) grains, so it is a silica sand. We test all our sand to make sure it provides a higher degree of hardness and durability in comparison to other sand providers.

River sand is also a component in a planting soil to improve drainage and to help break up clay soil.

Our products are bagged, protected, transportable and easy to store.

River Sand is good for all construction activities like concrete production and plastering as it is well graded.

Due to its natural occurring, it has all type of size which make this sand well graded .It has minimum void and silt so cement w\requirement will be minimum.

CHARACTERISTICS

- Clean
- Outside storage and resist bad weather conditions
- Easy to handle
- Consistent quality of content

SPECIFICATIONS



Purity

River Sand supplied by us is refined and made free from all sorts of impurities using latest machineries and excellent supervision of our team of highly skilled professionals.



High in Quality

It is rich in mineral content and its superior quality makes it perfect to be used in construction work by diverse industries.



Greater Workability

Contains superior quality river sand with distribution of analysis base particles clean & double screened. Enhanced workability. Easy to maintain the ratio of mortar ingredients.



Taking Precautions

Increased resistance to moisture Reduces Shrinkage cracks, crazing and gives uniform smooth surface.



Usability

River Sand is composed of sub-angular, hard, durable, and dense grains, it is mainly used by the Construction Industry, Water Filtration Plant, Ready Mix Plant, and Ready Plast Plant.



Accessibility

The Sand that we deal in is obtained from well-known rivers of the country to ensure it is free from any kind of unwanted substance.



Packaging

With the assistance of our streamlined packing system, we are able to meet the customized and standard packing requirements of the clients.

COMPARISON

Low Cement Consumption, High Concrete Stress and High Cheering and Pressure Force Resistant. River sand to have high suitable sand for mortar with plastering to get final soft facing-coating on wall surfaces in order to save much painting and finishing materials consumption. Processing is easily by normal machines without using and Explosion materials or any Crushing machines. River sand is totally free of any Organic Materials or any radiation or big blocks or concrete stones.